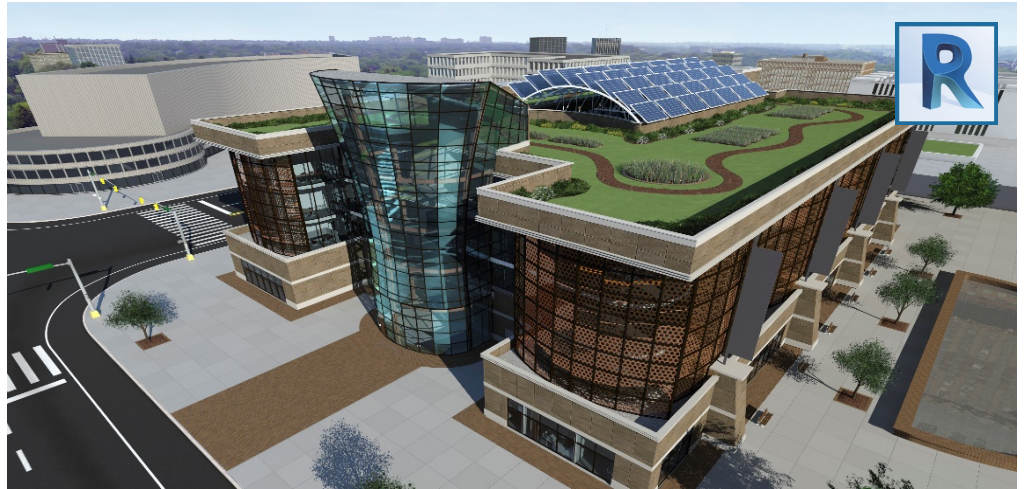


Revit families and content creation

Training course outline

The ability to create families and intelligent parametric content for use in your Revit models helps you realise extensive productivity improvements.

This course teaches everything you need to know to begin creating your own Revit families and content.



Course summary

Teaches you techniques and best practices for creating dynamic, flexible and data rich families and content within your working environment.

The techniques you learn cover the basics of family and content creation within Revit, from profile and simple families through to nested fully parametric objects.

They are relevant to all disciplines, whether you're using Revit for Architecture, Structures or MEP.

The training is practical and 'hands-on'; throughout the course you create your own content that you can take away and use on your next Revit project.

Duration

Two days.

Who should attend?

This course is ideal for anyone who wants to get to grips with the fundamentals of family and content creation within Revit.

Typical delegates include:

- Design professionals.
- Managers who wish to improve the workflow of interdisciplinary projects.
- Manufacturers who want to encourage use of their products.

Delegates should have a basic understanding of construction techniques. You do not necessarily need to have any existing Revit experience.

In-class or live online

You can attend course in-person at any of our centres, or participate online from your place of work or home.

To read about our approach to online training, see armada.co.uk/live-online-training.

General information

Armada is an Autodesk authorised Training Centre (ATC). Our *Revit families and content creation* course are accredited by Autodesk.

Revit courses are hosted by Autodesk Certified Trainers (ACTs) with vast experience of using Revit in industry.

Whilst attending training at our centres, delegates have the use of a computer running licensed Revit software to practice the techniques taught. Refreshments and lunch are provided.

Course fees can be paid by card or bank transfer. We accept purchase orders from UK-registered companies and public sector organisations.

If you're self-funding your training, you can pay in staged payments, interest-free, over 12 months.

Course materials and certificate

Delegates receive:

- A comprehensive training guide for Revit families and content creation.
- An e-certificate from Autodesk confirming attendance on an accredited Revit course.

After course support

Following Revit training, delegates are entitled to 30 days' email support from their trainer to help with any post-course issues.

Further information, prices & dates

See armada.co.uk/course/revit-families-and-content-creation-training.

Course syllabus

See over.

Course syllabus

Topics	Sub-topics
The Family Editor	Getting to know the Editor UI Differences between the family and project interfaces
Templates	A guide to selecting the right template Family categories Hosting
Framework	Working planes – understanding the different options Reference lines or planes? Setting dimensions as parameters Creating additional parameters
Basic family creation	Creating 2D and 3D geometry Family testing Family types

Topics	Sub-topics
Shared parameters	Shared parameters vs family parameters vs project parameters Tags and labels
Advanced topics	Materials Equations Catalog creation Family type parameters
MEP and other sources of content	Loading and using 3D objects from other software MEP connections Labels
Families and standards	Background data in families COBIE standards NBS standards
User-created families	Supervised practice exercise to create your own families, specific to your needs